

# MediaMaking STUDIOS



# OUR SPACES

## STUDIOS

Large square footage dedicated to productions video and photography, with 2 studios including: a green screen, a white limbo and areas dedicated to visual development

## MAKE-UP

Spacious dressing room with makeup stations, toilets, headwash and shower

## SERVICES

- Catering for lunch boxes or specific requests
- Logistics and support operations
- Set designer to set up customized sets

## AREAS

- Working Area
- Lounge bar
- Kitchen for food styling or catering



# OUR STUDIOS

## STUDIO 1

PHOTO STUDIO  
OPEN SPACE WITH  
WHITE CYC

## STUDIO 2

PHOTO STUDIO  
OPEN SPACE WITH  
GREEN SCREEN CYC

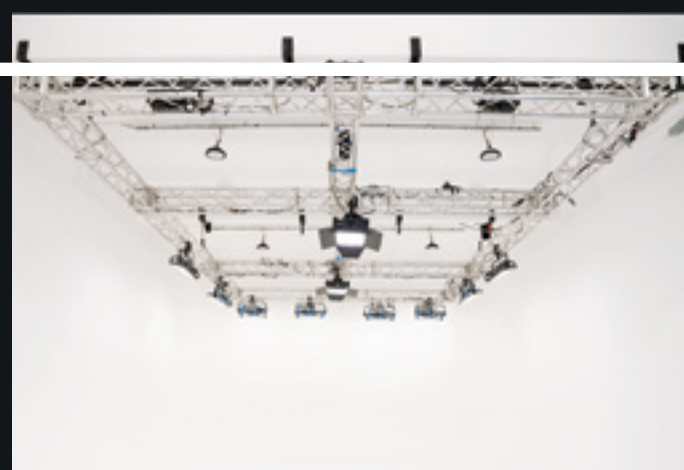
## LOFT AREA

PHOTO STUDIO  
OPEN SPACE WITH  
LOUNGE AREA





# STUDIO 1





## THE SPACE

**140 sqm**

open space  
with White Cyc

## STUDIO DIMENSIONS

**L8 x P18 x H5,5**  
metres

## ELECTRIC POWER

**16 kW**

## EQUIPMENT

Ring of motorized  
trusses

Electrically dimmable  
daylight



Wi-Fi



Mini Bar



Access from internal  
road



Possibility of  
vehicle entrance

### VIDEO LIGHTS KIT:

6 x Skypanel S60-C  
2 x Skypanel S120-C  
2 x Nanlux 650B

### PHOTO LIGHTS KIT:

4 x ProHead Plus UV 500W  
2 x Profoto Pro-10 2400  
AirTTL Power Pack  
2 x Profoto D2

Based on the customer's needs  
it is possible to customize  
equipment rental.





# STUDIO 2





## THE SPACE

**64 sqm**

open space  
with Green Screen Cyc



Wi-Fi



Mini Bar



Access from internal  
road



Possibility of  
vehicle entrance

## STUDIO DIMENSIONS

**L8 x P8,5 x H4,5**  
metres

## ELECTRIC POWER

**16 kW**

## EQUIPMENT

Ring of motorized  
trusses

Electrically dimmable  
daylight

## LIGHTS KIT:

6 x Skypanel S60C  
2 x Arri L7-C

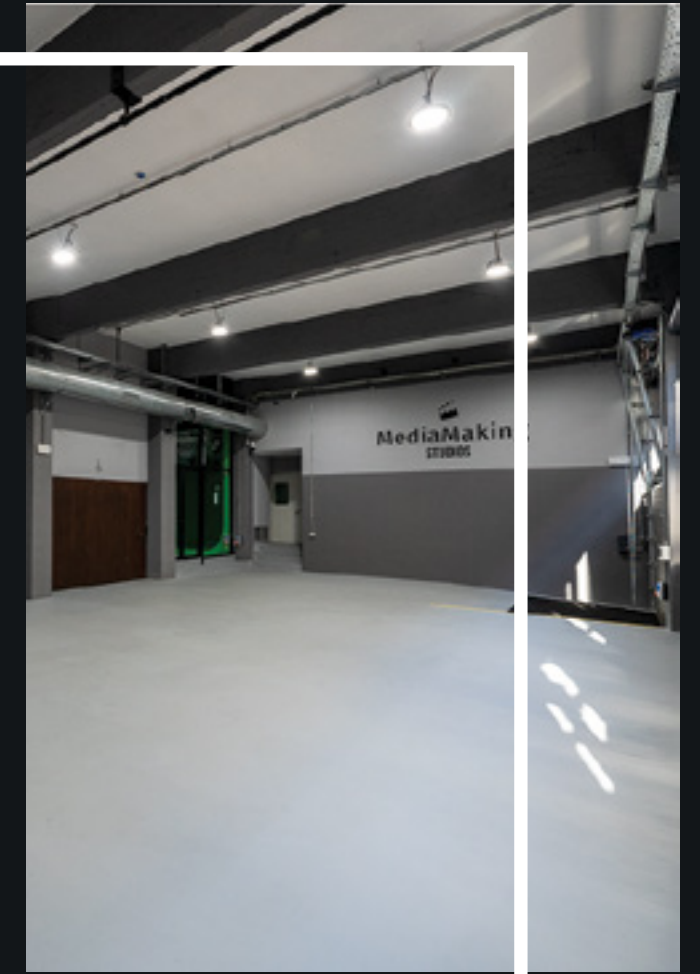
Based on the customer's needs  
it is possible to customize  
equipment rental.





# LOFT AREA

MediaMaking  
STUDIOS







## THE SPACE

**136 sqm**

open space  
with Lounge Area



Wi-Fi



Lounge corner



Access from internal  
road



Possibility of  
vehicle entrance

## STUDIO DIMENSIONS

**L17 x P8 x H4,5**  
metres

## ELECTRIC POWER

**16 kW**

## EQUIPMENT

Electrically dimmable  
daylight

### ON REQUEST:

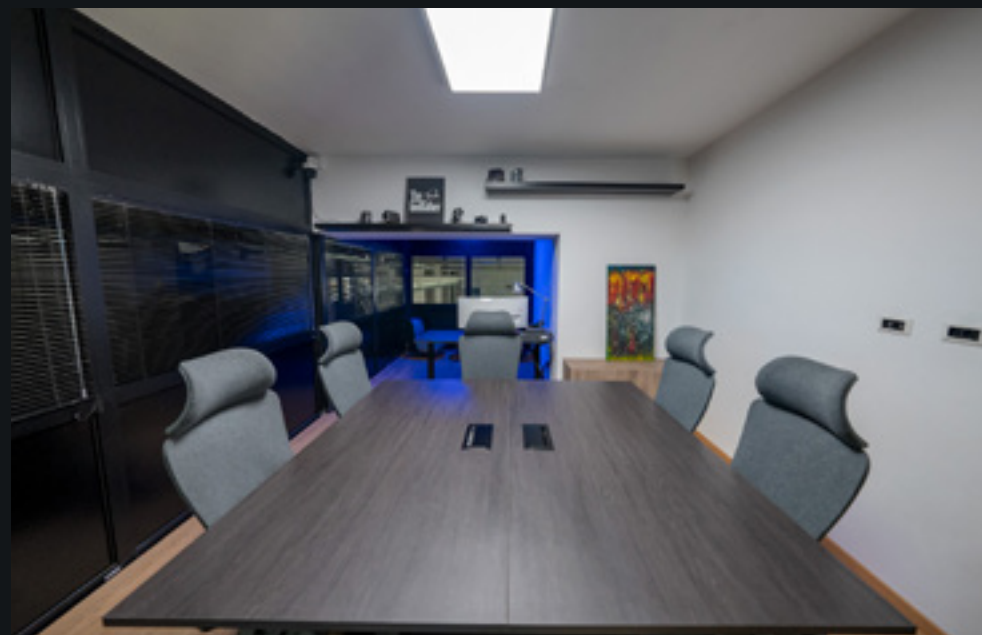
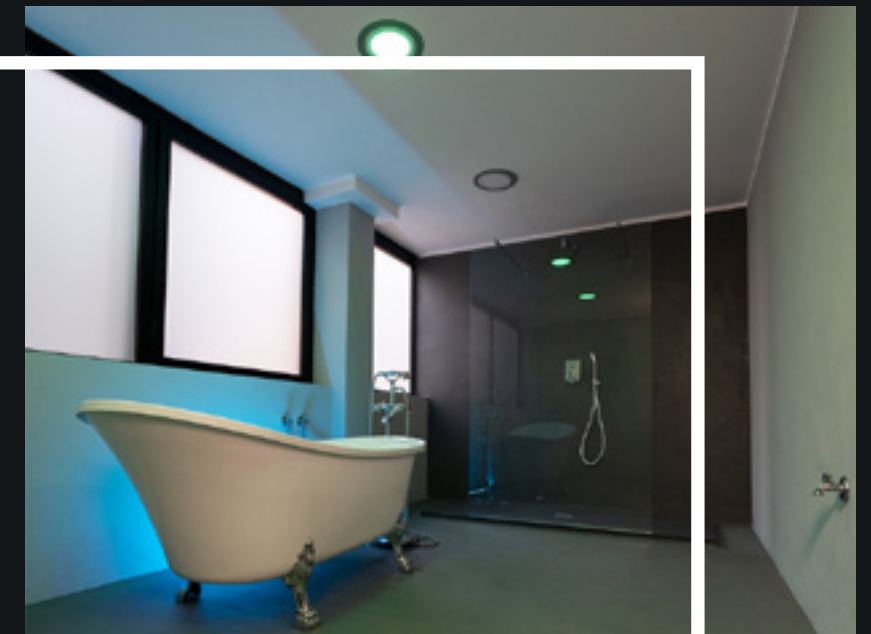
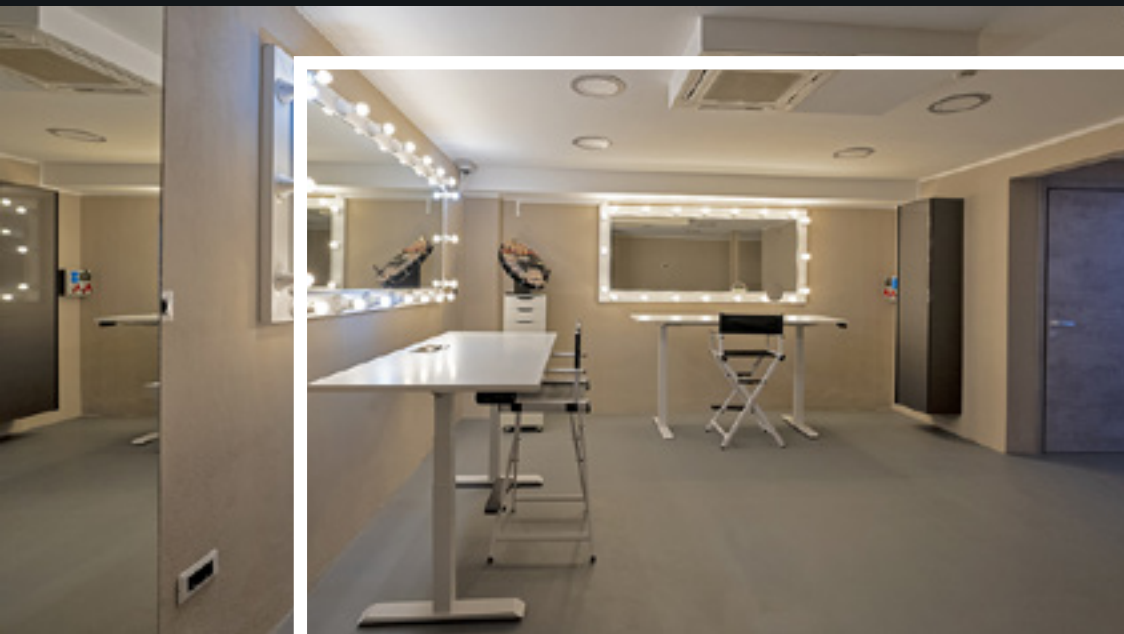
possibility of customised  
set design with professional  
scenographer

Based on the customer's needs  
it is possible to customize  
equipment rental.





# EXTRA AREAS







# WHERE WE ARE

## ENTRANCE

Via Mestre 19/A,  
20132 - Milan

## METRO

5 minutes from the  
subway, stop  
"Udine"

## LOCATION

Within an  
industrial complex  
with several services  
within a short distance

## PARKING

Availability of  
parking spaces within  
of the complex

*Lidia Parazzoli*  
*Account*

*+39 0236523732*  
*info@mediamaking.com*

